



Satellite

FAMILY CHILD CARE SYSTEM
NEWSLETTER

March 2025

Welcome Satellite Affiliate members!

Michelle Endvick – Learning 4 Life

Congrats on your Reaccreditation!

Karla Gonzalez-Ramirez – Tesoritos

Satellite Gathering





New Process!

Ratio Exception Request Form

Satellite understands that there are a variety of reasons why accredited programs wish to go beyond accreditation ratios. We use this exemption option to provide a level of reasonable flexibility for our accredited programs, while still deeply valuing the positive impact of our low child to adult ratios.

To learn more about why low ratios are so important, view [Child:Early Childhood Educator Ratios](#).

See the updates to this process below.

Eligibility:

- Satellite accredited programs who achieved accreditation at least 12 months previously.
- This request must be granted before enrolling an additional child.
- This exemption allows for **one** additional child beyond Satellite's ratios.
- This exemption is intended for infrequent and careful use. Its availability is limited to 6 months or 1300 hours maximum (whichever amount is greater) within any three-year period. Multiple requests can be granted within three years, not to exceed 6 months or 1300 hours cumulatively.
- The program may not also have an exemption for operating hours.
- The program must be in good standing with Satellite and regulation.
 - No outstanding "required changes" from the most recent accreditation. Programs who have completed required changes may be considered.
 - In the last 12 months, no regulatory health or safety violations. No warnings, order letters or forfeitures. View your regulatory (licensing or certification) violations [here](#).

If granted:

- This exemption allows for a temporary increase in the number of children in your program beyond Satellite's ratio requirements.
- The program must meet all other accreditation standards.
- This increase is for the specific group of children indicated on this exemption form. No additional children may be added to the child care program *beyond* Satellite's child to adult ratios during the duration of the exemption.

If not granted:

- Programs may utilize Satellite's openings list to refer families to other accredited program openings while the family waits for availability in your program.
- Consider hiring an assistant in your program to allow for a larger group size.
- Utilize the [Smaller Groups Help Your Child's Development](#) factsheet on Satellite's website to explain to families the importance of small group sizes in your program.

If you have any questions, please contact your Satellite accreditation consultant!

LEARNING AND CONNECTING TOGETHER



SPOTLIGHT ON Peluchitos Day Care

Program Owner: Maria Luisa Mas
Accredited Satellite Educator

"In the spring of 2016, we opened the doors to Peluchitos Day Care, thus projecting ourselves to a community of children whose learning supports their future development. This work really allows us to enjoy the simplest things in life, those that are priceless and that make your days blessed moments (hugs, smiles, words of encouragement)." – Maria Luisa Mas



"Peluchitos Day Care maintains a five-star quality rating and accreditation through Satellite, and we are qualified with a Registry Career Level 15. We are accountants by profession, and we also have various credentials in early childhood education from the University of Wisconsin – Platteville." – Maria Luisa Mas



"We are proud to provide high-quality service, promoted with love and with safe, stimulating, and fun environments. This nurtures healthy children with values, and at the same time promotes their emotional, physical, and social development. We also provide them with the opportunity to learn through play, decision-making and social interaction, achieving in them a positive orientation that allows them to strengthen their skills, good manners and a solid foundation. We promote participation and constant communication with parents and make our program a family environment that allows children to develop at their own pace." – Maria Luisa Mas



Rich Sensory Experiences

Relevant Satellite Accreditation Standards

IV. Supporting Children's Development

E. The provider offers a wide range of opportunities for children's sensory, large, and small motor development.

4. The provider plans for developmentally appropriate sensory experiences both indoors and outdoors.



The Basics

Sensory experiences involve play with one or more sensory systems, including visual, auditory, tactile, gustatory, olfactory, vestibular, proprioceptive, and interoceptive. Children experience the world through sensory modalities – sensations like sight, sound, touch, taste, smell, balance, body awareness, and internal state.

Why is sensory play important? Positive sensory experiences are essential in early brain development. As the brain processes sensory information, it stimulates neural pathways among specialized regions of the brain, laying a strong foundation for all future learning. With opportunities to engage the senses in a variety of ways, children strengthen their ability to receive, process, and utilize information. Sensory integration develops when children receive and process information from multiple sensory sensations. For example, children exploring water *feel* the wetness, *sense* the temperature, *see* the color and movement, and *hear* the splashing. Children begin to explore their preferences, which informs their sense of self and how they may **seek** or **avoid** sensory experiences to remain regulated. Sensory play opens opportunities for children to practice language, cognitive, motor, and social skills.

How can I incorporate sensory experiences?

- ❖ Consider your program's environment and activities-through a sensory lens. What opportunities do children have throughout the day to engage one or more sensory systems in playful, child-directed experiences?

Rich Sensory Experiences (Cont.)

- ❖ Consider your own sensory preferences and how it may impact your practice. What types of sensory experiences do you enjoy? What is calming to you? What do you avoid?
- ❖ Talk with children about sensory experiences by describing what they are doing and asking open-ended questions. “What does it feel like?” “How does it smell?” “What do you notice?”
- ❖ Keep it child directed. Encourage children to explore at their own pace and listen to their bodies as they explore their own sensory preferences.
- ❖ Plan and invite children to play with one or more sensory systems. Consider developmental appropriateness for each age group. Explore the resources below for fun and engaging sensory play ideas.

I want to learn more!

- [Sensory Play: Tip Sheet for Early Years Educators](#)
- [Ooey Gooey Squishy Plop! Sensory Play for Every Day!](#)
- [Sensory Play in the Early Years](#)
- [The Sand and Water Center in Child Care](#)
- [From Neurons to Neighborhoods](#)
- [The Importance of Sensory Play: Start Engaging the Senses!](#)



This resource is available to you through Satellite Family Child Care System, a YoungStar Connect Partner.

Registration Open!

Event

Wisconsin
Family Child Care
Association
2025 Conference

Register now!

Scan the QR code or visit

<https://lp.constantcontactpages.com/ev/reg/mvagrtg>



Dates

Thursday, Friday,
& Saturday

April 10 -12,
2025

Venue

Hyatt Regency
333 Main St
Green Bay, WI

Book your room now!



<https://tinyurl.com/WFCCA2025>

Steps

- 1 Save the Date
- 2 Invite Colleagues
- 3 Register & Pay
- 4 Reserve a Room
- 5 Choose Sessions
- 6 Pack a Suitcase
- 7 Go & Have Fun!

Keynotes

Friday
Chazz Lewis



Saturday
Carla Gull



Upcoming Professional Development



Exploring Quality in Family Child Care: Supporting Infant's Large Motor Development

Infancy begins a critical period of motor development. This course will explore gross motor milestones throughout the first year of life, the unique benefits of floor play, and pediatric recommendations for the use of infant containers (for example, bouncers, activity chairs, and swings). Participants will learn from occupational therapist Gretchen Becker-Crabb how to safely engage infants in floor play, including tummy time, in a mixed-aged environment.

March 11 • 1 – 2 PM • Zoom • English and Spanish • 1 hour of Registry credit

[Register here](#) by 3/9

Miss a professional development event?

Watch the recording on our [YouTube Channel](#).



Did you know?

IN 2024, SATELLITE CONNECTED

228

FAMILIES TO CHILD CARE OPENINGS
IN SATELLITE PROGRAMS.

Satellite Professional Development

Evening Professional Learning Opportunities



Wednesdays • 6 – 8 pm • Zoom • 2 hours of Registry credit • English and Spanish

Dates	Event	Registration
February 19	Transitions Throughout the Day in Family Child Care: Strategies, Skills, and Wisdom from Satellite Programs	Watch here!
April 23	How to Create an Environment that Supports Children's Ideas AND Maintains Your Boundaries	Register by 4/21
July 16	Promoting Calm Through Your Environment	Register by 7/14
August 20	Making it Work: Incorporating Rich Art Experiences into a Mixed-Age Setting	Register by 8/18

Exploring Quality in Family Child Care

Tuesdays • 1 – 2 pm • Zoom • 1 hour of Registry credit • English and Spanish

Dates	Topic	Registration
March 11	Supporting Infant's Large Motor Development	Register by 3/9
April 8	Back-and-Forth Interactions	Register by 4/6
May 13	Erikson Institute Presents: Using Observations to Plan Curriculum	Register by 5/11
June 10	Open-Ended Questions	Register by 6/8

Pyramid Model

Monthly on Mondays • 6 – 7 pm • Zoom • 24 hours of Registry credit • English only

Only for programs participating in Satellite's accreditation system.

Dates	Event	Registration
January 27 – June 9	Pilot Pyramid Model Family Child Care E-Modules with Reflective Coaching Cohort	Registration closed

Wisconsin Family Child Care Conference

Date	Time	Session	Registration
April 11	2:30 – 5:00 pm	Making it Work: Incorporating Rich Art Experiences into a Mixed-Age Setting	Register here
April 12	11:00 – 12:15 pm	Defining Your Philosophy	Register here
April 12	2:15 – 3:30 pm	Open-Ended Questions: What, How and Why	Register here

Satellite Social Events

These opportunities are open to educators participating in Satellite's accreditation system.



Educator Appreciation Dinner

A dinner in honor of family child care professionals • 6 pm

Dates	Location	RSVP	🌐
March 9	Eau Claire	RSVP here	English
May 14	Madison	RSVP here	English, Spanish
June 25	Milwaukee	RSVP here	English, Spanish
July 23	Appleton area	<i>Coming soon</i>	English

Satellite Gatherings

Time for family child care professionals to spend together • 6 pm

Dates	Location	RSVP	🌐
October 18	Eau Claire	<i>Coming soon</i>	English
November 5	Milwaukee area	<i>Coming soon</i>	English, Spanish

Satellite Support Groups

Noche Latina

An evening for Spanish speaking family child care professionals.

6 – 8 pm • Spanish • 4709 Verona Road Madison • Contact evargas@reachdane.org with questions

March 12

April 9

June 11

July 9

August 13

September 10

November 12

December 10

Sojourn

A support group for Satellite family child care professionals that meets at family programs.

Evening • Second Tuesday of every month • English • Madison area • RSVP to letthedragonfly@gmail.com

March 11

April 8

May 13

June 10

July 8

August 12

September 9

October 14

November 11

December 9

Arcoíris

A support group for Spanish speaking family child care professionals that meets at family programs.

Evening • Third Friday of every month • Madison area • RSPV to Margarita at (608) 446-6142

March 21

April 18

May 16

June 20

July 18

August 15

September 19

October 17

November 21

December 19

SATELLITE LOAN PROGRAM

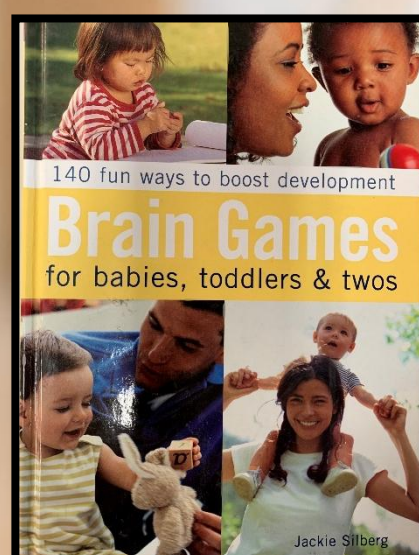
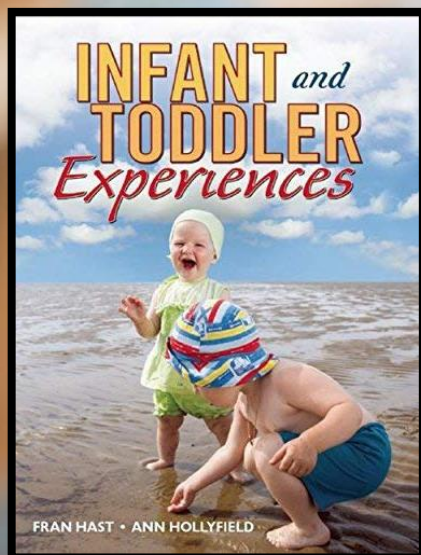
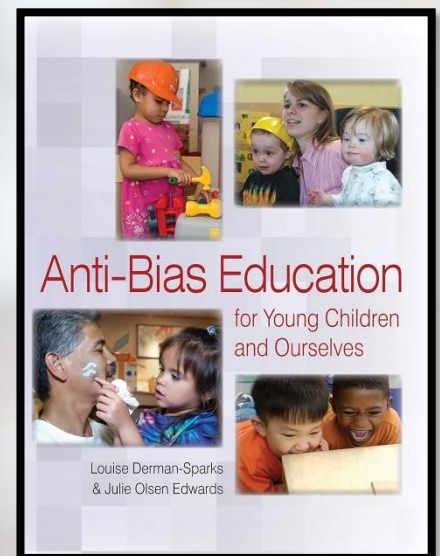
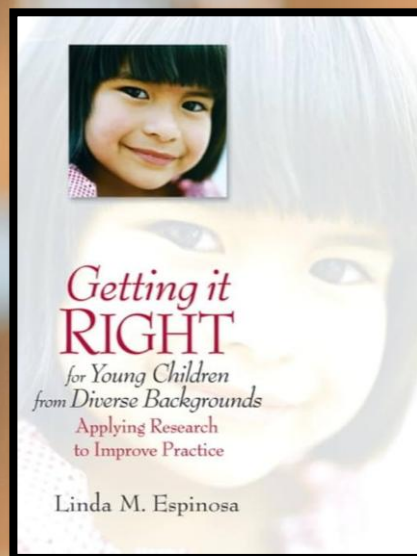
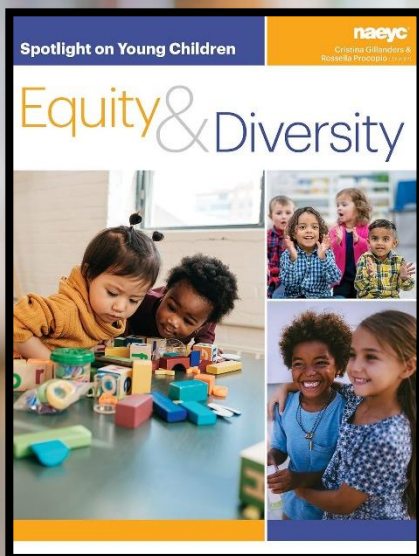
EARLY CHILDHOOD EDUCATOR RESOURCE LIBRARY

100+ books

Satellite members have full access to Satellite's early childhood educator resource books. Check the link below to view our full lending options.

Satellite Book Loans

When you choose a book, your consultant will inform you of whether the item is available immediately or if you're on the waiting list.



Wisconsin Agencies Supporting Your Family Child Care Program

PROFESSIONAL MEMBERSHIP ORGANIZATIONS

[Wisconsin Family Child Care Association](#)
[National Association for Family Child Care](#)
[Wisconsin Early Childhood Association \(WECA\)](#)

QUALITY RECOGNITION SYSTEMS

[Satellite Family Child Care System](#)
[YoungStar](#)
[National Association for Family Child Care \(NAFCC\)](#)

SPECIALIZED RESOURCES AND SUPPORTS

[Early Childhood Mental Health Consultation](#)
[Supporting Families Together Association \(SFTA\)](#)
[Career Development Counseling](#)
[Civitas Strategies](#)
[Wisconsin Early Childhood Shared Services Network \(WEESN\)](#)
[ParentPowered](#)
[Wisconsin Alliance for Infant Mental Health \(WI-AIMH\)](#)
[Early Childhood Health Consultation](#)
[Wisconsin Latino Chamber of Commerce](#)
[Child Care Resource and Referral Agencies](#)

PROFESSIONAL LEARNING

[The Wisconsin Registry](#)
[YoungStar](#)
[Satellite Family Child Care System](#)
[Wisconsin Family Child Care Association \(WFCCA\)](#)
[Wisconsin Early Childhood Association \(WECA\)](#)
[Wisconsin Early Childhood Shared Services Network \(WEESN\)](#)
[Wisconsin Alliance for Infant Mental Health \(WI-AIMH\)](#)

FINANCIAL SUPPORT

[Wisconsin Shares Child Care Subsidy Program](#)
[WECA Food Program](#)
(There are also county-specific food programs)
[T.E.A.C.H. Scholarship Program](#)
[REWARD Stipend Program](#)

ADVOCACY

[Wisconsin Early Childhood Action Needed \(W.E.C.A.N.\)](#)
[Raising Wisconsin](#)

REGULATION

[Child Care Licensing-Department of Children and Families](#)
Certification, a different type of regulation, administering agencies vary by county



BUSINESS MANAGEMENT

Helping organizations thrive

CIVITAS
STRATEGIES®



playground

Essential Tax Guides for Family Child Care

Simplify your tax prep with Civitas Strategies **FREE** home-based child care provider tax workbook!

Check out the FREE tax workbook [here!](#)

Simply your tax filing with the **FREE** TurboTax guide for child care providers!

Check out the FREE TurboTax guide [here!](#)

For Satellite
participating
programs only



The March Financial Wellness session is:

Protect Yourself from Fraud! Every day, scams become more sophisticated with twists and turns to fool victims out of hundreds, sometimes even thousands, of dollars. Additionally, advanced technology, including artificial intelligence (AI), continues to assist scammers with stealing consumers' money, personal information, and time. Join us with special guest, Tiffany Bernhardt Schultz, from the Better Business Bureau to learn about the Top 10 scams of 2024, how to spot the scams and what to do if you or a loved one becomes a victim.

Live Session: **March 12 11:30 AM** Zoom [Register here!](#)

(Use "Reach Dane" as the organization with whom you are affiliated)

TAKE ACTION

Get the tools and resources you need to tell your story and advocate for meaningful policy solutions.



Click here for advocacy tools and recourses

Governor Evers addresses child care funding issues and proposes action.

View his [complete statement](#) or watch the [video](#).



Satellite
FAMILY CHILD CARE SYSTEM



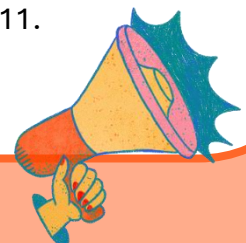
CALLING ALL FAMILY CHILD CARE EDUCATORS AND ADVOCATES

Join Satellite at the Wisconsin Family Child Care Conference during the Week of the Young Child, April 11-12, to help advocate for the early childhood field. This is a chance to have your voice be heard! Learn more about the conference [here](#).

Satellite will be having a booth containing ALL things advocacy. There will be an opportunity to take part in a video which will be compiled together and given out to local and state representatives in order to spread the importance of early childhood education. If you don't feel comfortable being a part of a video, there will also be an opportunity to write a letter to the legislators as well as other advocacy resources.

If you're unable to attend WFCCA Conference on April 11 and 12th, please know that your voice is still important to us! Complete our Google form to respond to a writing prompt which Satellite will then send to the local and state legislators. Please fill out by Friday, April 11.

[Click here to complete the form!](#)



Satellite Team



Estella Vargas

Accreditation Consultant
Bilingual (Spanish/English)
(608) 852-7724
evargas@reachdane.org



Amy Christianson

Language Access, Curriculum, and
Satellite Director
achristianson@reachdane.org



Jen Jorgensen

Accreditation Consultant
(608) 416-9531
jjorgensen@reachdane.org



Laura Simkin

Satellite Associate Director
(608) 381-2676
lsimkin@reachdane.org
*Contact Laura with all general questions
related to accreditation and Satellite services.*



Rachel Halstead

Accreditation Consultant
(608) 690-0174
rhalstead@reachdane.org



Grace Eilers

Family Child Care Content
Specialist
(608) 400-2823
geilers@reachdane.org



Stephanie Winkel

Accreditation Consultant
(608) 416-3996
swinkel@reachdane.org



Laura Cruz

Administrative Assistant
Bilingual (Spanish/English)
(608) 910-0382
lcruz@reachdane.org



Mykenzie Lerg

Accreditation Consultant
(608) 843-5378
mlerg@reachdane.org

Satellite Family Child Care System

(608) 275-6740

satellitefcc@reachdane.org

Mailing and drop-off address:

2096 Red Arrow Trail, Fitchburg, WI 53711

*Label mailed and hand delivered items with "attention:
Satellite" & and the Satellite staff person's name*

Satellite Supports



Thank you to our partners for helping us provide these services at no cost to participants:

